



AGENDA

Spring Meetup 2025

April 24-25, 2025

Otero College Student Services Center Rm 102

La Junta, Colorado

5 Western Ave, La Junta, CO 81050

Thursday, April 24

Southeast Colorado National Historic Site Visits

Hosting the meetup in La Junta presents a unique opportunity for attendees to experience the geography of Southeast Colorado through visits to Sand Creek, Amache, and Boggsville National Historic Sites. GIS Colorado has arranged a field trip to these significant locations, including guided tours, that will replace our usual Thursday training. Registration for this field trip includes breakfast served before departure to Sand Creek and lunch between stops at Amache and Boggsville. Departure from the Otero College Student Center Western Ave parking lot is scheduled for 7:30 am. See logistics section below for additional information.

Cost: \$35

Friday, April 25

GIS Colorado Quarterly Meetup

Virtual Meetup

The sessions will be recorded. A live stream will be attempted to accommodate federal professionals.

8am to 9am

Coffee and Networking

Join us for coffee and networking starting at 8am; presentations at 9am.

9am to 9:10am

Welcome and Announcements (10 min)

9:15am to 9:45am

Mine Construction 2D/3D GIS Support - Challenges and Successes

Rich Chamberlain, GIS Practice Leader, AECOM (30 min)

9:50am to 10:20am

Discovering The National Map

Cynthia Ritmiller, National Map Liaison, USGS (30 min)

10:25am to 10:55am

Discussion - What I Didn't Learn in College, But Maybe Should Have

Steven Hick, GIS Director and Professor, University of Denver (30 min)

11:00am to 11:45am

Lead Service Line Inventories - An Update in Colorado

Nathan Lowry, GIS Lead/Admin, Plummer (30 min)

11:45pm to 12:45pm

Lunch

12:45pm to 1:15pm

GIS in Southeastern Colorado - A Moderated Discussion

Led by Nathan Lowry, GIS Colorado (30 min)

1:15pm to 2pm

GIS Colorado - Current State and Round Robin

Lucas Thelen, 2024-2025 Chair, GIS Colorado (45min)

2pm to 2:30pm

Break

2:30pm to 2:45pm

Wrap up and Closing

3:00pm

Clean Valley Recycling Volunteer Opportunity

The Old Sugar Factory, Sugar Road & Swink Drive
203 Swink Drive, [Swink](#), CO 81077



Questions?

questions@giscolorado.org

Program Abstracts and Descriptions

Mine Construction 2D/3D GIS Support - Challenges and Successes

Rich Chamberlain, GIS Practice Leader, AECOM

Join me on a tour of my support for geologists/geotechs at a confidential mine site's construction activities. I'll cover use of Field Maps, ArcGIS Online web maps, LiDAR processing, and future 3D analysis of the construction site. I'll attempt a quick demo of these tools and discuss the challenges in their set up and use, plans for their long-term maintenance, and use of 3D tools.

Discovering The National Map

Cynthia Ritmiller, National Map Liaison, USGS

The U.S. Geological Survey (USGS) National Geospatial Program (NGP) has a broad portfolio of programs and initiatives, offering a suite of geospatial data and services that advance science, support government, enlighten citizens, and enable decision-making. The National Map provides a foundation of digital geospatial data representing the topography, natural landscape, and constructed environment of the United States.

The National Map includes a diverse array of geospatial products and services that support and enhance planning, mapping, analysis, and response. NSGIC members are familiar with the 3D National Topography Model (3DNTM), including the 3D Elevation Program (3DEP) and the 3D Hydrography Program (3DHP), through the Data for the Nation cooperative projects, but did you know that The National Map has multiple applications and means to access and view data and maps? This presentation will showcase National Map products, services, and applications with a focus on practical demonstrations of accessing and using new 3DHP products and services, finding and visualizing lidar data using 3DEP LidarExplorer, and creating customized OnDemand Topo maps using topoBuilder.

Lead Service Line Inventories - An Update in Colorado

Nathan Lowry, GIS Lead/Admin, Plummer

After a 16 Oct 2024 deadline to deliver a Lead Service Line Inventory (LSLI) for every Public Water System (PWS) in the United States, the Environmental Protection Agency (EPA) issued a final ruling on Lead and Copper Rule Improvements (LCRI) on 30 Oct 2024, requiring PWSs to

- Identify connectors, their materials and locations
- Include street addresses for locations when assigned
- Maintain the inventory, submitting annually and accounting for further identification or replacement
- Validate material values for water service lines and connectors
- Identify materials for any water service line prior to its replacement

What is the level of effort to develop, improve, validate, and maintain these inventories? What motivations are there for compliance regardless of the federal administration? Come see a status of inventories from publicly available information on the Internet and discuss efforts to complete and improve these over time.



Questions?

questions@giscolorado.org

GIS in Southeastern Colorado - A Moderated Discussion

Led by Nathan Lowry, GIS Colorado

Geographic information systems include any representation of land, infrastructure, or phenomena on, above, or under the earth's surfaces. This includes land assessment and infrastructure inventory maps and records regardless of how these data are organized or stored.

In southeastern Colorado, we have a wide-range of the level of development of existing records systems to characterize land, in federal, state, regional, county, municipal, district, or private service providers hands.

Participate in a regional discussion on the maturity of information within organizations in southeastern Colorado and how that information can be sustained and further developed to allow for economic development, equitable taxation, infrastructure management, community planning, and more.

Fundamental questions will be raised, ranked and answered by participants, with outstanding issues enumerated to be addressed by appropriate experts or responsible parties.

Logistics

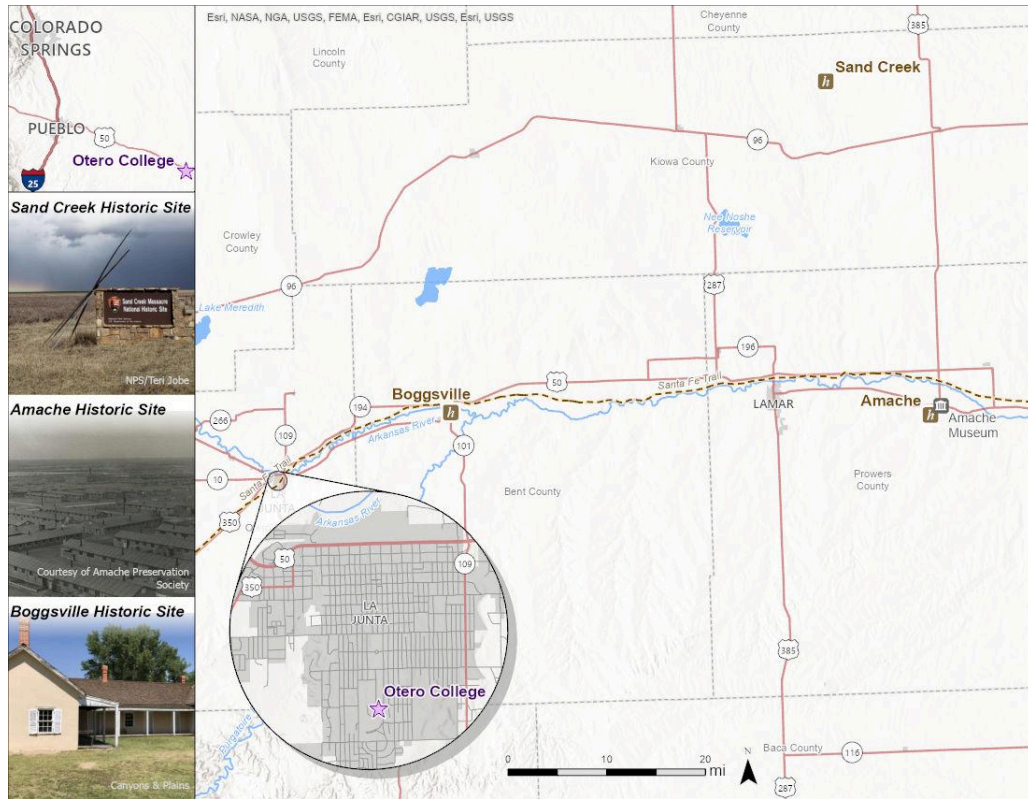
Meeting Location

Otero College Student Services Center, Room 120
5 Western Avenue, La Junta, CO 81050

Entrances at 2001 San Juan Avenue and 5 Western Avenue (ADA Accessible).

Breakfast on 4/24 will be available at 7:00 in the Otero College Western Ave parking lot, adjacent to the Student Services Center. Lunch will be provided between field trip stops.





Cancellation policy:

100% refund 7 days before the scheduled event

0% refund less than 7 days before the scheduled event

Real-time streaming of presentations anticipated to accommodate federal professionals.

